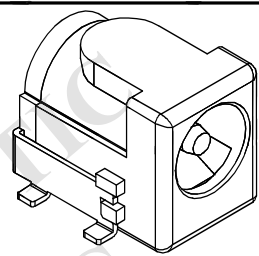
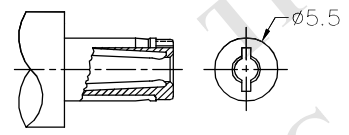
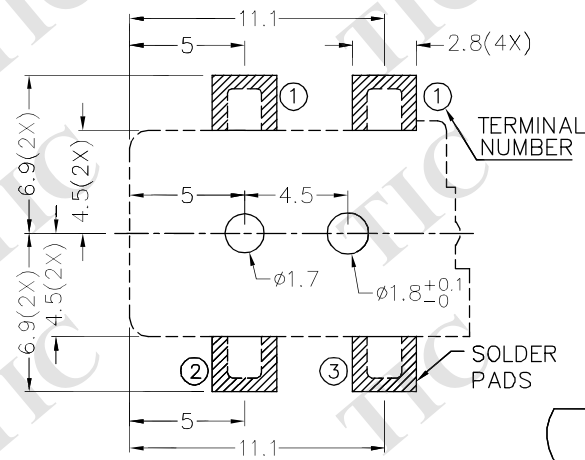
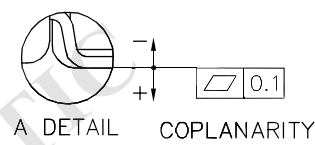
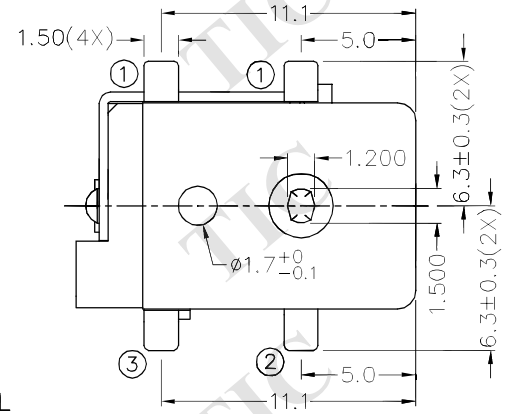
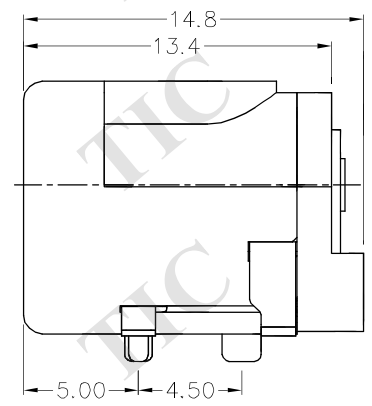
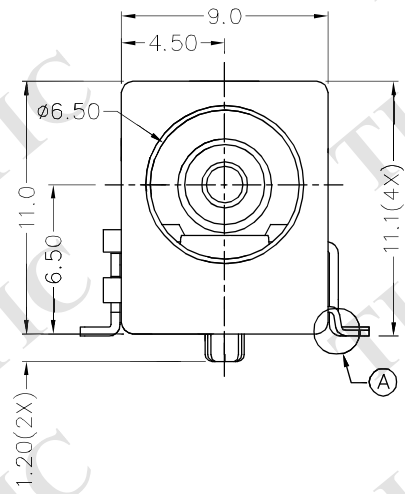
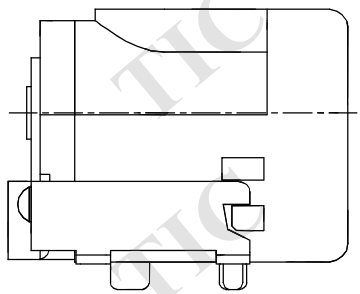


F E D C B A



RoHS
Compliant

ZONE	SYMBOL	REVISION	APPROVAL	DATE
		UPDATE THE DRAWING	J.X.KUANG	25-1-2021



* MATERIAL

- CENTRE PIN : COPPER
- TERMINAL 1 : BRASS
- TERMINAL 2 : COPPER ALLOY
- TERMINAL 3 : BRASS
- HOUSING : HIGH TEMP. PLASTIC
- COVER : HIGH TEMP. PLASTIC

MODEL NO.	TDC-016H
SCHEMATIC	
CENTER PIN	ø2.000mm
	ø2.5 ⁺⁰ _{-0.1} mm

RECOMMENDED PCB LAYOUT
TOLERANCE: ±0.05
(TOP VIEW)

RECOMMENDED
DC MATING PLUG

TIC TECHNIK INDUSTRIAL CO. LTD.

DESIGN	K.Y.AU-YEUNG	DATE	9-10-2003	SCALE	3:1
DRAWING	H.Q.ZHOU	DATE	25-1-2021	MATERIAL	*
CHECK	T.Y.LI	DATE	25-1-2021	DWG. NO.	TZ\DC016H-A/1.2
APPROVAL		DATE		SHEET	1/1

PART NAME	HIGH CURRENT SMD DC POWER SOCKET	TOLERANCE UNLESS	0.0±0.2	UNIT:
PART NO.	TDC-016H	OTHERWISE SPECIFIED:	0.00±0.1 0.000±0.05	

F E D C B A