

# CUSTOMIZABLE Pogo Pin & Housing



- Spring-loaded connector
- High Life Cycle: 20,000 Cycles
- Contact Resistance: 50 mohms max.
- Can be used to mate with a number of different surfaces
- Small size improves the portability of the product
- Flexible with end product design

✉ [enquiry@technik.com.hk](mailto:enquiry@technik.com.hk)  
[www.technik.com.hk](http://www.technik.com.hk)

# CUSTOMIZABLE

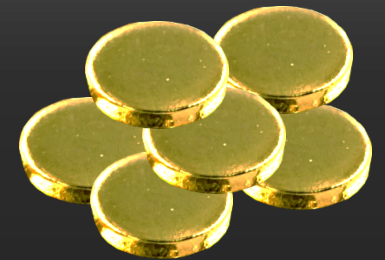
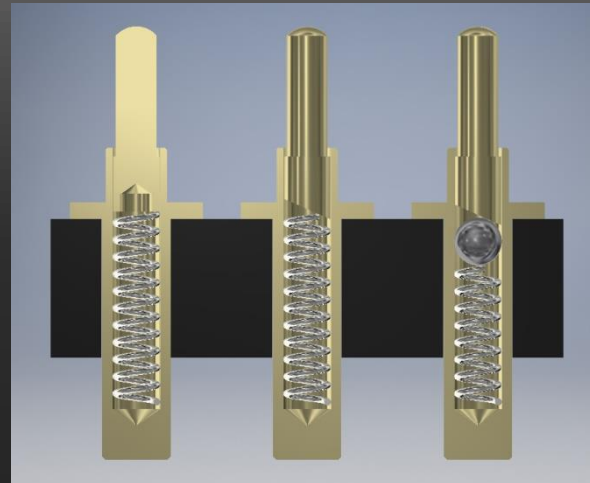
## Pogo Pin & Housing



TECHNIC INDUSTRIAL COMPANY  
TECHNIK INDUSTRIAL COMPANY LIMITED

### Application:

- Medical Device
- Entertainment
- Household Device
- Security Device
- Industrial Device
- Personal Device
- Automotive



✉ [enquiry@technik.com.hk](mailto:enquiry@technik.com.hk)

[www.technik.com.hk](http://www.technik.com.hk)