

F

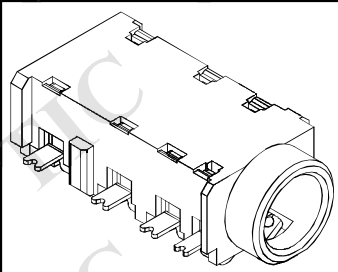
E

D

C

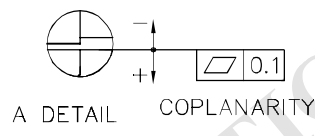
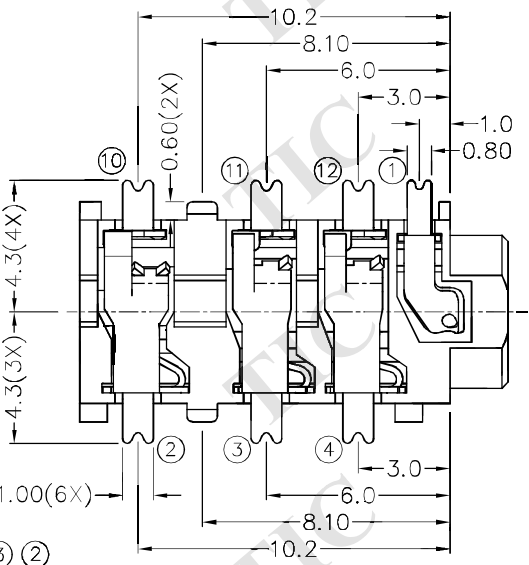
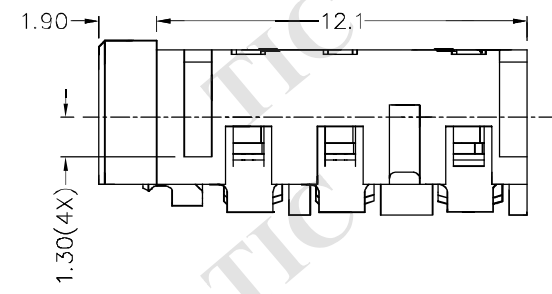
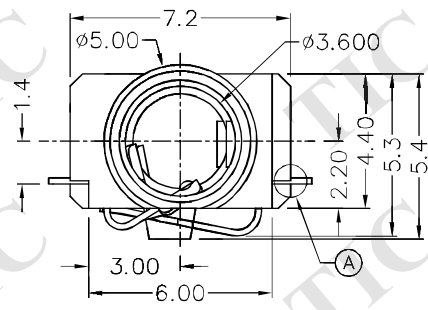
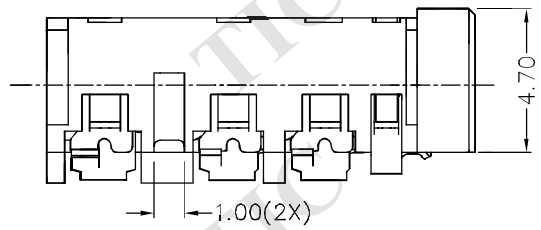
B

A

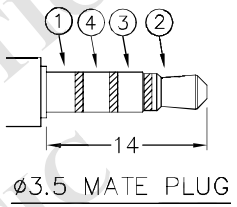
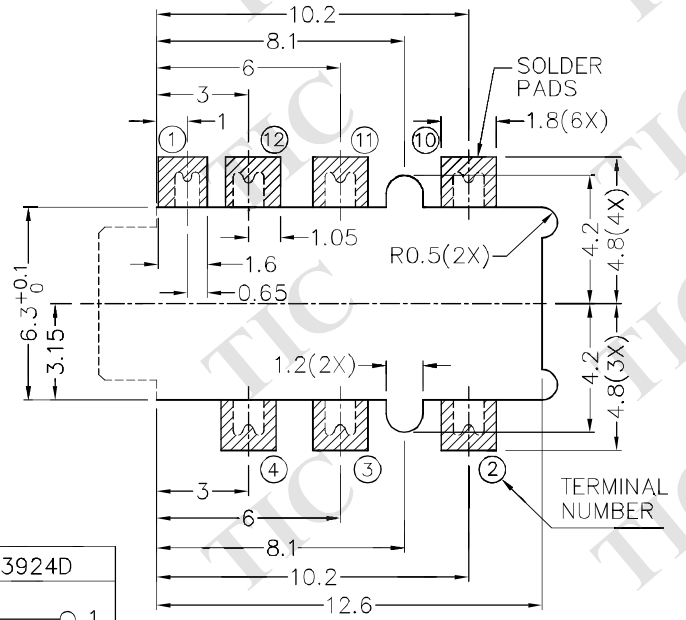


RoHS
Compliant

ZONE	SYMBOL	REVISION	APPROVAL	DATE



* MATERIAL
 TERMINAL 1 : COPPER ALLOY
 TERMINAL 2 : COPPER ALLOY
 TERMINAL 3 : COPPER ALLOY
 TERMINAL 4 : COPPER ALLOY
 TERMINAL 10 : COPPER ALLOY
 TERMINAL 11 : COPPER ALLOY
 TERMINAL 12 : COPPER ALLOY
 HOUSING : HIGH TEMP. PLASTIC



MODEL NO.	TSH-3927D	TSH-3926AD	TSH-3925AD	TSH-3925BD	TSH-3924D
SCHMATIC					

RECOMMENDED PCB LAYOUT
 TOLERANCE: ±0.05
 (TOP VIEW)



TECHNIK INDUSTRIAL CO. LTD.

DESIGN	G.P.YI	DATE	1-7-2006	SCALE	4:1
DRAWING	T.Y.LI	DATE	3-1-2017	MATERIAL	*
CHECK	H.L.TAN	DATE	3-1-2017	DWG. NO.	TZ\SH392D-A/1.0
APPROVAL		DATE		SHEET	

PART NAME	3.5mm SMD STEREO JACK	TOLERANCE UNLESS	0.0±0.2	UNIT:	mm
PART NO.	TSH-392D	OTHERWISE SPECIFIED:	0.00±0.1 0.000±0.05		

F

E

D

C

B

A